

SPRUE EXAMINER



KITTY HAWK

AH-6J & MH-6J Reviewed

by Floyd S. Werner, Jr.



- *The Cotton Report*
- *On The Table*
- *Old Rumors & New Kits*

Tecnokar Trailer with 20' Tank

NEW
MIDLAND

No 3929 model kit
model kit

1:24 scale
1:24 scale

ITALERI



Reviewed by Ben Morton

austinsms.com



January 2019

News • Articles • Features • Opinions • Advice • Humbug



CONTENTS

Page 3 The President's Notepad – By Aaron Smischney

Page 4 House Cleaning

Page 5 Kitty Hawk 1/35th scale AH-6J & MH-6J - By Floyd S. Werner, Jr.

Page 14 The Cotton Report - By Rick Cotton

Page 16 Tecnokar Trailer with 20' Tank - By Ben Morton

Page 20 On The Table - by Flanged End Yoke

Page 24 Old Rumors and New Kits:

Page 24 Shipping News – by Rick Herrington

Page 25 The Air Report – by Ron McCracken

Page 28 Tracked Topics – by Rick Herrington

Page 30 It Figures – by Michael Lamm

Page 34 Sundries - Golzar Shahrzad

ASMS Officers & Chairpersons

Aaron Smischney - President; president@austinsms.org

Ian Latham - Vice-President; vicepresident@austinsms.org

Eric Choy - Finance Minister; treasurer@austinsms.org

Mike Lamm - Secretary; secretary@austinsms.org

Rick Herrington - Newsletter Editor; editor@austinsms.org

Ian Latham - Newsletter Design; editor@austinsms.org

Ian Latham - Show Coordinator; showcoordinator@austinsms.org

Mike 'Hollywood' Gilsbach - Webmaster; webmaster@austinsms.org

Jeff Forster - IPMS/USA Coordinator; chaptercontact@austinsms.org

Chris Chany - Rumpus & Hokum Abatement Director & Lifestyle Coordinator

Our Sponsors

Phil Brandt (in memorium)

Eric Choy Angela Forster

Jeff Forster Russ Holm

Rick Willaman Jack Johnston

Mike Krizan Rick Herrington

Aaron Smischney



www.austinarmorbuilders.com



www.kingshobbyshop.com



www.wmbros.com



www.ctsms.org

IPMS/USA Support the Troops Initiative

The IPMS/USA initiative was established to provide model kits, supplies and reference materials to our servicemen and women serving in combat zones, recovering in hospitals, and rehabilitating in specialized facilities.

The program is expanding into other areas as well. Some local programs take place in USO facilities, some are centered around active duty personnel and are scattered across the country.

The IPMS/USA Support The Troops program is still going full-tilt. The national program director is Jon Emery. Jon is accepting any and all contributions and is sharing them with all of the active programs around the country.

www.models4troops@gmail.com



www.austinsms.org

Austin Scale Modelers Society (ASMS) is a chartered chapter of International Plastic Modelers Society (IPMS/USA). ASMS meets on the third Thursday of each month. Annual dues for full membership are \$25/individual or \$30/family. The views expressed in this newsletter are those of the authors. It is intended for educational purposes only.

ASMS does not endorse the contents of any article.



El Presidente

By Aaron Smischney

Greetings fellow modelers!

Well, it's a New Year and you know what that means time for resolutions!

I want to challenge all of you to step out of your comfort zones and try and model a subject outside of your usual subjects. One of the great things about our club is that we have superb modelers of all subjects, I am sure if you need help you can just ask! I plan on finishing an airplane from the Bondo collection this year, even if it's the only model I finish. Maybe we could do some beginners seminars for each model type, "your first tank" etc? Experts in each subject could also recommend good beginners models.



Let me start!

If you want to build a tank I recommend Tamiya M4A3E8

It's a super fun build and not very complicated. it's also one color so will be easy to finish! The suspension is simplified but still looks great when finished. The tracks are respectable one-piece rubber band types.

If you prefer German I recommend a Tamiya Panzer II.

Once again, you will end up with a handsome model out of the box and its single color will make painting a breeze!

See you at the next meeting!



Aaron

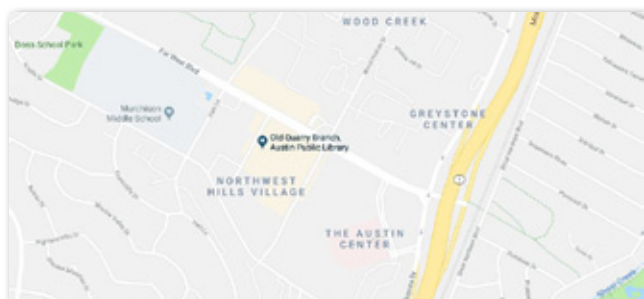




HOUSE CLEANING



ASMS MEETING



**Third Thursday each month
7:00pm - 8:45pm
at the
Old Quarry Branch Library
7051 Village Center Dr.**

Next meeting January 17th, 2019

No Reservations Neccessary!



***Whew! Now it's time to dig
for the change in the
couch cushions.***

ASMS Club Dues Are Due!

Annual ASMS club dues are \$25.00/individual
or \$30.00/family.

You may bring your dues to a club meeting or remit same
to Eric Choy, 13213 Marrero Drive, Austin, TX., 78729.



Events

2/16/2019 **Alamo Squadron's 'ModelFiesta 38'**
San Antonio Event Center
8111 Meadow Leaf Drive, San Antonio, TX78227
Show Theme - 'Record Breakers!'
www.alamosquadron.com/modelfiesta

Club Quarterly Contests

- January: Open
- Febuary: Open
- March: Open Catagory (Awarded)
- April: Open
- May: Open
- June: Procrastinator Contest (Maybe)
- July: Open
- August: Open
- September: Bondo Contest
- October: Open
- November: Open
- December: White Elephant/Model of the Year

Monthly Meeting Presentations:

- January: Choose Procrastinator Kits
- Febuary: ?
- March: ?
- April: ?
- May: ?
- June: ?
- July: ?
- August: ?
- September: ?
- October: ?
- November: ?
- December: ?



Kitty Hawk 1/35th scale AH-6J and MH-6J Kit Review

By Floyd S. Werner, Jr.



Disclaimer: I helped develop this model. I am an unpaid consultant to Kitty Hawk. I provide them with drawings, photos, proof the CAD, and provide marking options. I like to get that out there so there is no hint of collusion. Those that know me know I'm honest so what you get here is an unbiased review. Some may not agree with that but you've been warned. I also take full responsibility for any errors.

The Little Birds of Task Force 160 (SOAR) are the unsung heroes of the regiment. There were two types of Little Birds, the AH-6J is the armed variant and the MH-6J is the operator hauler. The Kitty Hawk kit allows you to build either variant, but you must choose which one.

The model comes in a very sturdy cardboard box with some fantastic artwork on the top. One thing that is missing on the box top is the Werner's Wings logo. It was just an oversight. I was heavily

involved with this kit. That is Kitty Hawk's way of saying thanks by including my logo. We just missed it prior to printing. No harm, no foul. Photos 1 and 2

The kit includes three sprues. The plastic is light grey with very little flash. The detail is refined and beautifully rendered. There are some really small parts. I did find a few parts that were short shot. Contacting Kitty Hawk's Sophia Lymn at Sophialymn@gmail.com for the replacement parts



had them on the way. The rivets are recessed which some will not like, but it looks good. The parts allow you to build either version Little Bird.

The clear parts are packaged separately wrapped in a clear wrapper inside a small cardboard box. This ensures that the parts are not cracked or scratched.

Two frets of photo etch are included. One includes the ammo chutes that are required for the two guns.

The instructions look easy enough to follow and is set up in the usual Kitty Hawk manner with the color profiles in the center on fold out pages. The one thing about the instructions is that they aren't too clear as to which parts go to which version. Careful

studying is required before cutting parts. The first profile is an AH-6M which is not in this kit. Maybe at a later date.

The decals are a bit of a disappointment. They are printed in a light grey as opposed to the olive drab or black color.

Well it looks good in the box, let's see what it

builds up like. I'll do this step by step.

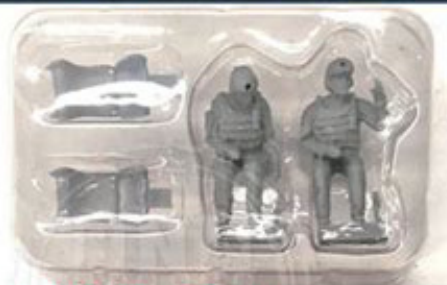
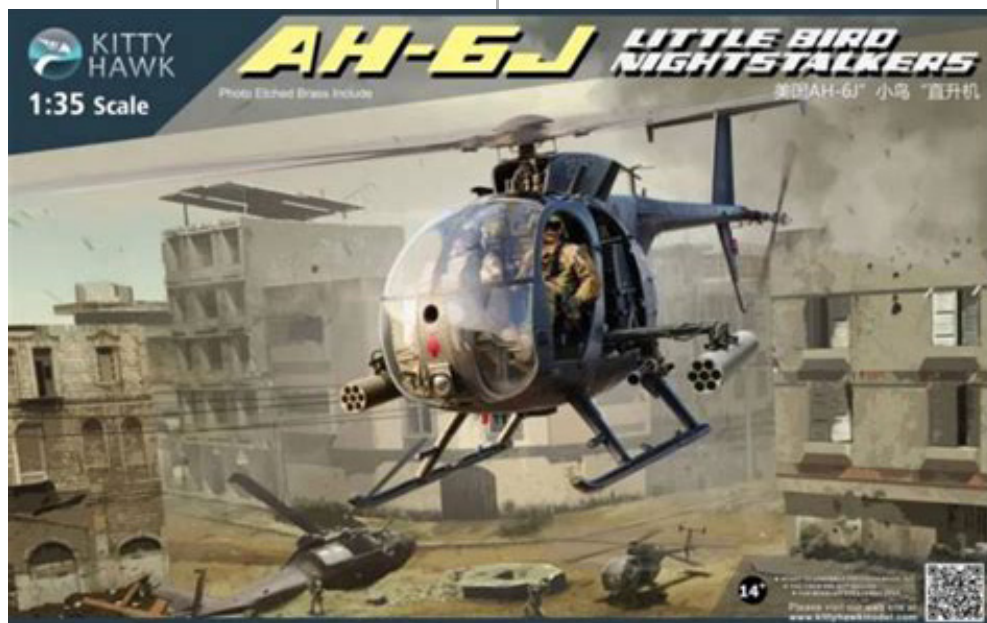
Step 1 starts in the engine compartment. The Allison C-250 is the best rendition of this little engine that I've seen. Where the exhaust comes out should be rectangular but when mounted you can't notice the difference. The fit of the parts is very good. I did need a touch of filler on

the exhaust stacks to make them smooth but everything looks great and just needs some painting.

Various shades of burnt metal are used. The engine assembly was painted with a mixture of Alclad, AK Metallic and Model Master which provided color variation. If you are going to display your model closed up you only need to paint the exhaust itself, Part

B63. One thing to note in this step is that you may have to drill some small holes in part B1 to fit the ignitor leads.

Step 2 The engine compartment is a thing of beauty. The level of detail here rivals some of the best resin sets. Everything fits as advertised but there is one problem in the instructions. Parts B70 and B71 are mislabeled on the instructions. Just



**2 Pilots w/Seats
4 Soldiers w/Weapons
included**

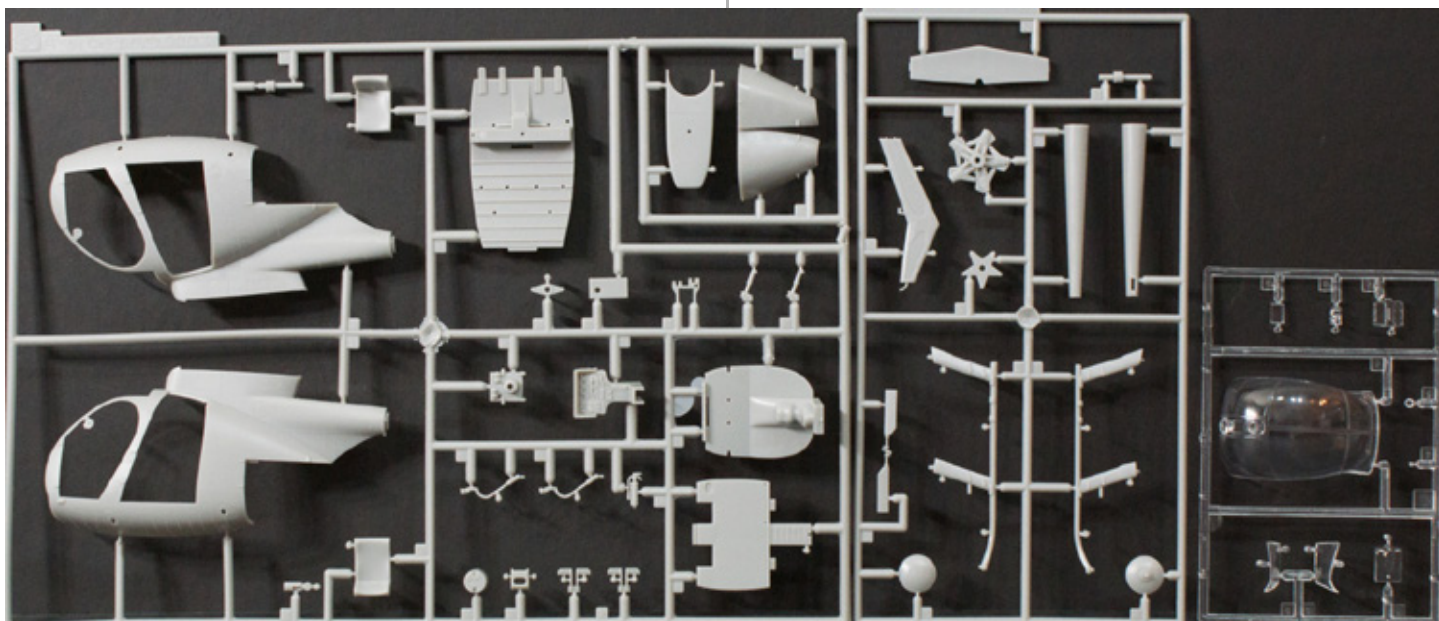




switch them around. If you look at the photos it is easy to understand what is being called out. Once you understand that everything fits perfectly. The engine compartment is flat white. Pretty plain but simple to paint. If you are going to close up the model, then you don't even need to do that. My engine compartment is painted with Alclad White Primer and weathered with Mig Cold Grey Wash.

Step 3 is the beginning of the cockpit. It is also contains the first short shot part. Part C54 is missing the very bottom of the stick. It is barely noticeable but shouldn't have happened. Another thing that I noticed which was annoying is that part C57 is a mirror or part B58. It should be exactly the

I recommend that you paint the entire cockpit assembly Tamiya NATO Flat Black. The instrument panel and center console are provided as decals. I thought I'd check out how they worked. After carefully cutting away the decal clear film I could then use the decals normally by adding the decals to the instrument panel right over the kit detail. My technique is to slide the decal off the backing paper and through a puddle of Future. Then carefully apply it to the model. I let it set up for about an hour. Then apply a coat of Solvaset and let it dry thoroughly. After it dried, I used a brand new #11 Xacto blade and pierced any bubbles and reapplied Solvaset until the decal had set down completely. It is amazing that the detail matched



same. I had two kits so I used one from another box. The other kit has the wrong parts but at least they are the same shape. One error in the instruction is that C57 should actually be B57. C21 and C20 are the side mounted screens on the side of the instrument panel and are only installed when the FLIR is installed. The kit doesn't include the FLIR or mount. One side of the instrument panel is lacking a hole. It is easy enough to add with a drill bit if you want to add the detail or filled if you don't but shouldn't have happened. Since my MH didn't have the FLIR installed I filled the holes. The rest of the step is nicely detailed.

up perfectly. This is not the first time that Kitty Hawk has done this with the same amazing results. The entire assembly is sprayed Alclad Flat, then the gauges were highlighted with drops of Micro Krystal Kleer.

Step 4 continues with the cockpit bulkhead. I made a mistake and missed the avionics above the pilot's seats and behind them while proofing them. I'm sorry. I'm working on it. DO NOT REMOVE THE LITTLE TABS on the side of A50. These are mounts for the fuselage halves later and easy enough to remove if you aren't careful. Assembly is easy enough. Part B32 which is the cockpit light does



require you to drill a hole because it isn't on the kit. Assembly of the seats is pretty impressive, but you must follow the assembly sequence. Add A-18/19 to the floor but **DON'T REMOVE** the support rods from these parts. They are needed to support the seat. Then add the seat backing, A63 and A64, before you add the seat bottom A27/A28. I left the backs and bottoms off until I put some paint under and behind them. The seats can be either flat black, faded olive green or a combination of the two. The seatbelts can be green, black to a faded deck tan.

Step 5 is the rudder pedals and again we are presented with a short shot part. One of my part B49 is missing the actual pedal. I made my own with some brass tubing that was sanded down to shape and cut to shape. I was pretty impressed with my scratch

building but what bothered me is why I should have to do it on a brand-new kit. The other issue with this assembly is that rudder pedals don't have holes drilled in them to fit part B41. You can handle it a number of ways, I drilled holes that addressed what should have been there. Another option is to cut off the tabs off of B41 and flush mount them. Either way works. The parts are really small and a pain to clean up but take your time and you are rewarded with a beautiful assembly.

Step 6 is only required if you are building the AH-6J. I am doing one of them as well, so I cleaned up the platform. The placement of B12 and B11 are a little vague but if you look at the instructions it

is pretty clear. One thing that is not quite correct is that the end armament platforms, C22 and C23, should be solid and not cut out. The cutout is on the short version of the platform. It is easy to modify if you want the short version just sand off some of the attachment arms. The ones in Somalia are the longer type so I added some .040 plastic to fill the hole. Everything fit perfectly.

Step 7 is for the MH-6J version. If you follow the instructions, they would have you add the benches in this step. **DON'T! DO NOT** add the benches at this time. There is no way to put them through the

doors once mounted and you'll just have to break them off. One note about this step is that A20 and A21 are mis-marked on the instructions, as are A5 and A6. A20 and A21 will only fit one way so no real issue. The key with A5 and A6 is there is a small cutout



on them. It should be facing aft to fit properly. I recommend that you add A20 and A21 to the floor now and build up the benches and their supports at this time then set them aside. If you are going to add the fuel tank, then make sure you open the holes in the floor.

I took the time to paint the interior, including the fuselage halves and doorways, now **BEFORE** I added the canopy. Tamiya NATO Black was painted overall. Then a panel line wash from AK Interactive for Black Camouflage was added to the panel lines. Allowed to dry slightly and then a slightly damp flat brush was used to blend the excess around the interior. This gives a nice used look. Some



sponge weathering was used with Model Master Magnesium and some silver pencils. Some Mig Pigments for North Africa was used to add some dirt to the floor.

Step 8 Add the fuel tank if you are going to. I didn't need to add it to my MH as it appears that the MHs in Somalia didn't have them. Assembling the cockpit and the rear bulkhead is a very sturdy assembly. If you are doing the AH version, it is a good time to add the armament bench. Don't forget to open the hole for the fire extinguisher regardless of version.

Step 9 will require you to open some holes on both fuselage halves prior to assembly. Make sure you open up the correct holes. Parts A4 and A2 are for the MH FRIES mounts but are on all versions of the J model Little Bird. I deviated from

the instructions here. I added my tailboom halves to the corresponding fuselage halve. This proved to be an easy way to ensure alignment at this time. PE8 barely fits the hole so be sure to add it before you close up the fuselage. Another thing that I recommend IF you are going to have the engine cowlings closed is to add the engine compartment access doors to the fuselage halves at this time. Do it now while you have the ability to align everything. When you bring everything together the fit is remarkable. There are tabs on the bottom of the fuselage halves that aid in the process.

Another recommendation is to decide which type of intake is going to go on the left side and

install that part now and not at Step 15. This allows you to work it should you need to. Also, it allows you to add a small backing plate for PE-9 as the fit is very loose.

Step 10 has you adding the windscreen. I masked off the rear portion of the canopy and sprayed AK Smoke on the inside. BEFORE you add the canopy don't forget that you have to add the magnetic compass to the clear canopy. The instructions are vague at best where to add the compass and has no mounting point. I painted the compass then used Tamiya cement, not the extra thin type, and

very carefully added a stripe of it to the compass and added it to the canopy. It worked perfectly, however, I think I have my compasses a little bit too high. It should mount just above the instrument panel. I did have to sand the front of my instrument



panel while test fitting the canopy, but it is no big deal and hidden once the canopy is added. I also sanded the back of the light housing which is on the clear part. Once all that was done the canopy fit really well. I used some Tamiya cement to hold things in place then used Tamiya tape to hold it all together while I added some Elmer's White Glue to the entire circumference of the window. Once everything dried I used a cotton swab and blended and removed the white glue from the window.

Step 11 is building up the M-134 guns. This is a pain in the butt. I decided to build mine up from tubing instead of the plastic parts. That meant that I didn't have to clean up the mold lines.



Using the kit parts as patterns I used Albion Alloy telescopic tubing cut to length. The photo etch flash suppressor, PE6, requires you to bend it. Here is how I did mine. I first cut off the round end caps. First off you only need one end cap. I set them aside and used my Small Tools SMS006 Photo Etch Bending & Rolling Deluxe Brass Assist. It is expensive but so worth the money, especially on a project like this. I finished rolling this so that it was circular and held in place with some superglue. Then I was just a matter of adding one of the end caps and attaching it to the tubing. I think the next time I do it I'll use Live Resin M-134 minigun barrels. So much simpler. The guns themselves go together remarkably well as long as you take your time.

Step 12 is the GAU-19. I did not build up the GAU-19 as my AH-6J didn't need it.

Step 13 has you add the guns. Don't do it at this time. It also has you build up the landing gear. Some have complained about the landing gear being multiple parts. I like the ability to add either type of skid. Some have questioned whether of the skids are the thicker type used on the A/MH-6M, if they are then it isn't obvious to me. I know I provided the measurements from an actual aircraft. The fit of the landing gear tips was good. Adding the skids to the model was pretty easy. The mounting areas are a little small but attached well enough with Tamiya cement. I used tape to hold the gear down and then used a sanding stick on top of the housing to make sure the top of the model was parallel.

Step 14 concentrates on antennas and ammo

chutes. Since this was an MH-6 I didn't need the ammo chutes. You have to look at your subject to figure out which antennas to use. I left the doors off as they are not installed on operations. There were no issues. Antenna, A33, seems a little large. I used a Werner's Wings APR-39 blade antenna where A33 goes.

Step 15 adds the other side of antennas. One thing that was left out for some reason was the sail type antenna. I raided the Dragon/DML kit for this antenna. We proofed it but for some reason it didn't make the kit. Werner's Wings is working on that as well. The upper portion of the doghouse gives you two options.

My option was the plain type but the square antenna on it that is shown on the instructions is not included. I added one made from styrene. In case you didn't add this back at



Step 9. There are two types of plugs for the left side depending on your subject. My MH didn't have the inlet scoop, so the flush mount was used. Before you put A54 on I recommend that you add a backing plate for the PE part, PE9. The fit is really loose. The mounts for the FRIES are added at this time. Pay attention to the drawings to see how they go. I have mine slightly off but decided to live with it. The landing light is installed. There is a hole for the FLIR mount but since no FLIR is included I had to fill the hole with Apoxy Sculpt. While that was drying I added a pitot tube from Albion Ally tubing, which for some reason is not included in the kit even though it was on the CAD. Another thing



missing is the IR formation light inside the vent on the inlet on the nose. Luckily, I had some from Werner's Wings that I added. You could always do the same thing with a little bit of Elmer's Glue and toothpick.

Step 16 is the tailboom portion. I added mine earlier in the build as part of the fuselage halves. This made life easier for me. The vertical tail was built up by adding the end caps first which is just a butt join. After drying the vertical part of the tail was added to the horizontal. You have to decide which lighting assembly to use as there are two different types. One of the things that is 'interesting' is that the rear mounting lugs are not included in the kit, but they are shown on the instructions. I used some .30 tubing to add them, but you shouldn't have to do that.

Assembling the tail rotor gearbox is easy if you take your time. The key is to line up the mounting points. The tail rotor assembly was a pain to put together. The first thing to do is to be careful when removing A32, the tail rotor crosshead, if you cut off the mounting point inadvertently all is not lost. Leave a little bit of a tab to mount in the hole. Then there is the clean up of the pitch change rods and the corresponding tabs on the blade assembly. If you clean them up they will slide together perfectly. It took some time but was doable easily. I set my tail rotor aside to paint separately.

Step 17 is the main rotor controls and swashplate assembly. The very first thing to do is to drill the

holes in part B78 to mount things to. Mine had one hole in the part but not in the other three holes. Once you do that the build up of the swashplate is easy. I recommend that you DON'T add C56 and A47. These will be added in the next step with the blades and make it easier to have them removable. When built up the swashplate assembly is perfect.

Step 18 is the rotor assembly. I cleaned up the hub, A46 to make sure everything sets solid. The blades are very secure when adding them to the hub assembly. Since I didn't add C56 and A47 now was the time to bring them together with the hub. Here is how I did it. Using A47 to align things up.

Add C56 to the hub, A46, and allow to dry completely. Once dry add, B40, the pitch change links. They will allow you to mount the swashplate to the bottom of the PC links and end of the swashplate. The PC links fit into the end of the swashplate. If done properly

they will line up perfectly. Now you can remove the blade assembly.

Painting is where things start to look great. I painted things as I went along because there are some areas that need to be black underneath or behind. Tamiya NATO Black is my go to black color. It isn't too dark. I used plenty of shades of black and dark grey throughout the build. I used Tamiya tape to mask off the cockpit. The huge doorways were masked off with the clear doors, which were attached with white glue to tack them in place. Then the canopy area was sprayed with Tamiya NATO Black. The whole model then got a

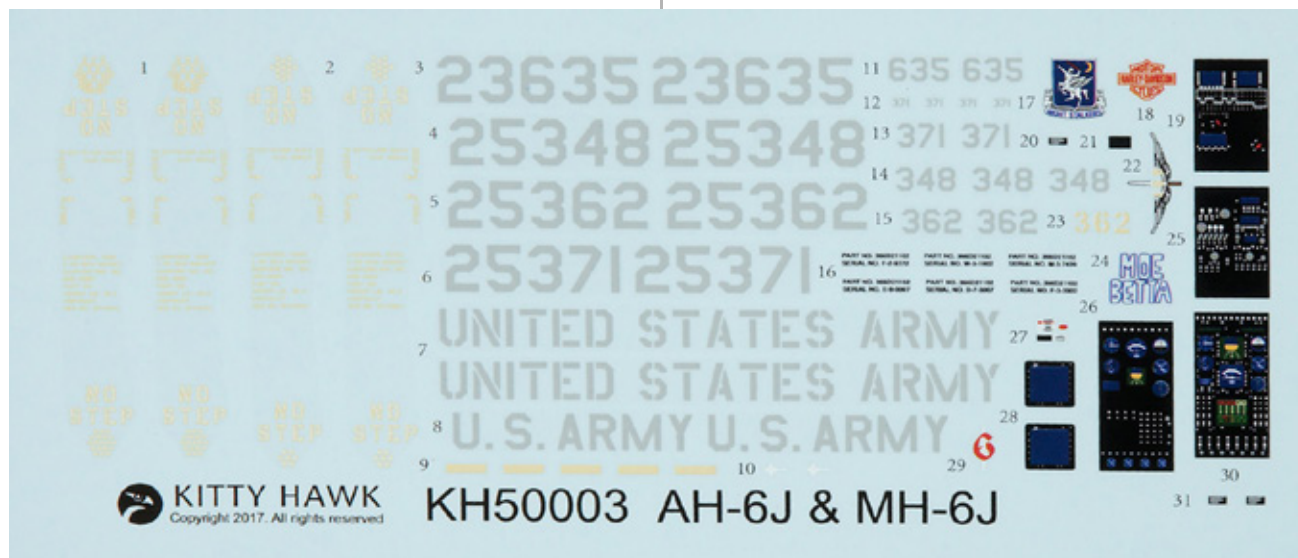


coat of Alclad Grey Primer. The model didn't need anything else.

Other than a little bit of white glue around the canopy I can't remember using any filler on this model. Which to me is amazing. So, without anything to clean up I painted the entire model with the Tamiya NATO Black. The upper surfaces and some panels were highlighted with Tamiya German Grey. This put some variation in the paint.

A coat of Tamiya Clear was added over the model to prepare it for decals. I had a picture of an aircraft that I wanted to do. Little did I know that the picture was taken during the filming of the movie, "Blackhawk Down" instead of at the actual mission. I didn't find this out until later. Actually, as I was building this model a wave of

I wanted something different for my MH. I thought about adding the FRIES ropes as they were installed on the subject aircraft. I was going to use some 110-parachute chord, but it was a little too big. What to do? I racked my head then realized that the inside of the chord there was another chord. I pulled it out and was really pleasantly surprised to discover a great looking rope replica, but it was white. I used a lighter to 'melt' the end of the rope so it wouldn't unravel. I threaded the 'rope' through the FRIES mount and then bent it over on itself and used super glue to attach the rope to itself then some Tamiya tape to replicate that feature. The rope was painted with Gunze Marine Corps Field Green and the tape was painted Lifecolor Satin Black.



new information was coming out on GOTHIC SERPENT, especially the Little Birds. Most of the tail numbers have been identified but what really came to light was that the markings were black and not olive drab as previously thought. I ended up using decals from the AOA Decal sheet Loach in Vietnam. This provided all the markings I needed with the exception of the olive drab number on the nose and the Six Gun markings which came from a Werner's Wings sheet. I'm debating on releasing a GOTHIC SERPENT specific sheet since we have most of the information now. Anyhow the decals are printed by Cartograf so they worked perfectly.

I sprayed Alclad Flat over the entire model.

Now that I had a black helicopter it was time to add some life to it. Using the AK Panel Line Wash for Black Camouflage I painted it in the panel lines. Then I removed the excess with a flat brush slightly damp with turpenoid. I swirl it around to get it mixed up and then I drag it down vertically to simulate rain streaking. Once it was dry, I used Titanium Buff and Titanium White artist oils as a dot filter. This fades and imparts rain marks as well. I did some chipping with Model Master Magnesium with a sponge and then a #2 and silver pencil.



Some Mig Pigments were added here and there to 'attach' it to the ground. Some Tamiya weathering pastels were used to weather the top of the model.

Rotor blades weathered with silver underneath, Tamiya NATO black on top of that. Then using Model Casters sanding sticks I wore out the leading edge. This was touched up with Model Master Magnesium dry brush. Then some Tamiya modeling pigments.

Then another light coat of Alclad Flat was sprayed over everything to seal it and to unify things.

The masks were removed and the canopy polished inside and out. The clear parts were added. Clear red, green and smoke were added to the appropriate parts. The final thing was to add the benches and the engine access doors. Tamiya cement plus some tape held them in place while they dried.

Overall this is a very nice kit that builds up beautifully, but it does require some modeling skills. Basic skills but still skills. It is not a shake and bake Tamiya kit. There are things that Kitty Hawk did or didn't do that made me scratch my head.

Some things are my fault and for that I'm sorry. The kit is not for a beginner but even a moderate modeler can make this into a winning kit. Kitty Hawk continues to improve with each kit, especially their helicopter kits, but there is still some room for improvement. I can't wait to see what they do next.

Take this review and make notes in your instructions and you shouldn't have any problems. I've got the AH in construction. Werner's Wings is coming out with the downward exhausts and some other upgrades for the kit. The kit decals are disappointing. I hope that I will be able to fix that too.

Bottom line, I had a great time building this kit and really enjoy what the end product looks like. I can't wait to finish up the AH-6J. I've really enjoyed

building Kitty Hawk's kits.
Photos 6 and 7

One last disclaimer, I helped Kitty Hawk design this kit. I had more than a little bit to do with it. With that said, I think you can see from this review I don't pull any punches with Kitty Hawk or myself. You get an honest and upfront review. Use it to make your build easier. I don't claim it to be a perfect kit but it one of the best fitting kits I've built.

Highly recommended

Thanks to Kitty Hawk for the review copy. Check your local hobby shop or online retailer to obtain your copy

Here is my list that I provided to Kitty Hawk to improve

- 1 - Missing the Avionics behind seats
- 2 - Missing Avionics shelf above the seats
- 3 - Sail antenna on the tailboom not included
- 4 - IR light inside the nose opening is missing
- 5 - APR-39 antenna on the belly is missing
- 6 - Square antenna on the doghouse missing.
- 7 - No FLIR or mount

Floyd





The Cotton Report:

THE DRAGON SLAYER

By Rick Cotton

**Note – the following all happened sometime before my recent decision to stop buying new kits. I had pre-ordered the beast before the new self-imposed ban took effect. So there.*

*Did you ever see an upcoming kit, not yet released, that just screams at you, “scr*w the price, you WANT ME”?*

You’re a modeler. Of course you have.

Question is, did you actually reach into your wallet for your credit card and buy the thing?

Did you do a quick calculation, house payment, cars, groceries, gas, beer, and come to a quick conclusion that, no, you can’t afford it, but that said fact doesn’t really matter, you will skimp elsewhere, you just need that freakin’ plastic right &%\$# now, OK?

Sure, you have.

You’re a modeler. Modeler math works differently.

Such was the case with me, when Zouki... Zoo-kee....those guys in Japan who did the 1/32 Shin-den, Horten and other beauties from the war years announced a forthcoming 1/32 Kawasaki KI-45 Toryu (“Dragon Slayer”) “Nick” twin-engine fighter, soon to come to my hot little hands here in the US of A.

The Nick, or Toryu, or KI-45, whatever way you want to go on it, has NEVER been injection-molded in 1/32. Leave it to ZM to put this bird out, and I hope it sells so many that they start thinking about cranking out Dinahs, Vals, Kates, and Jills

in the same scale. MAN, would that make me happy!



I have always wanted one of these planes in 1/32, even once going to the sad point of acquiring an ancient vacuform one from somewhere, way back when. We all know that the quickest way to get an injection kit done in your scale is to go through the hell of building a vacuform one first. Happens every time. I had vacuform 1/32 MiG 15’s, an F-105, a Ju-88...see a trend here?

It’s that paint scheme that just sucks me in. Like a night camo-splotched Heinkel 219, the speckled schemes of the KI-45 are just so eye-catching, with a sort of sinister beauty to them. Add to that the slim lines of the bird, beautifully-balanced in all respects...it’s just a VERY attractive airplane. No, it wasn’t a great performer in real life – it was helpless against Mustangs, Corsairs and Hellcats, but it did do some damage against B-29’s – often by suicidal tactics. But, since when do we modelers eschew a subject because it wasn’t very successful? Seems to me that there are Buffaloes and early MiGs and many other less-successful aircraft out there in my scale (1/32).

One of them however, the TBD, has still not made its appearance from the long-promising Chinese Hornblower company. If it ever does... which I somewhat doubt... I will be acquiring one.



I normally will not be found amongst those who shell out full retail and preorder new releases, sight unseen. Not usually...

What pushed me over the edge, however, was the review of this new kit by a writer who saw the beast for real at the Telford Show in November of 2018. Photo after photo of the exquisite parts of this puppy... OMG...incredible. ZM has a habit of giving you not just the outside shape of the airframe and a few tantalizing interior tidbits, oh, no, but a whole boatload of interior structure and parts galore, in fact, most of the airplane in this case.

True, if you button everything up in flying mode, you won't see a lot of it. But if you go the route of a lot of eastern European modelers, and cut open every single access hatch and panel... whoa, there's a lot of fantastic detail to be seen. I think it will probably be worth every bit of that extra effort and time expenditure.

Imagine an abandoned, forlorn bird sitting on a sunny Pacific island - every hatch open... maybe a few bits scavenged and cannibalized for other Nicks that got into the air, only to be flamed by P-38's, Hellcats and Corsairs... oooo, sun fading, and wear and tear everywhere... maybe one tire a little low on air pressure. I can see it already, and it's lovely. Maybe a tired and grimy Marine standing there, cigarette dangling from his mouth, debating whether or not to put a few rounds through it, "just to see if anyone's home". My imagination went wild on this one. I'll have to look up how to make a decent 1/32 coconut tree.

So, that did it. Out came the credit card. I have crossed the Rubicon and pushed the "pre-order now" button. Now, we hurry up....say goodbye to \$156....and wait.

Rick



News Articles Needed!



Italeri's 1/24th Tecnokar Trailer with 20' Tank Kit Review

By Ben Morton



From Italeri's assembly instructions: The 20' Tecnokar Tank trailer is designed to ensure the highest level of efficiency in the liquid and fluid transport. The sturdy steel frame, on a three-axle system, made by the Italian Company, is able to load a 20' tank ideal to be used in the container intermodal logistic. It can well satisfy the need of complex and integrated logistic companies that adopting intermodal transport solution of liquid goods. That's more and more important taking in consideration that, in the recent years, the intermodal transport solution of liquids, especially the liquids destined to the food industry, is a "must have" to guarantee reliability and respect of the delivery time.

Wait! What?

Here is what all that means in English. This kit represents the penultimate in modern, fluid transportation, whether by land (trailer mounted) or sea (stacked as a container). Hence the intermodal phrase. Developed by the Italian company, Tecnokar, this 20' tank is used principally in Europe, although the design has been adapted for the American market on a twin-axle trailer. This specific size of the tank is optimal for facilitating the speedy and timely delivery of liquid cargoes being utilized in the marketplace.

This 1/24th scale kit builds into a three axle, fifth wheel trailer, common in Europe, with a detachable, self-contained 20' tank for transporting liquids. Italeri released a similar kit not too long ago but that model features the same trailer with a 20' container, in lieu of the tank.

If you wish to show off this model as a complete unit, you will need to supply your own tractor. It should be noted that Italeri has a nice selection of

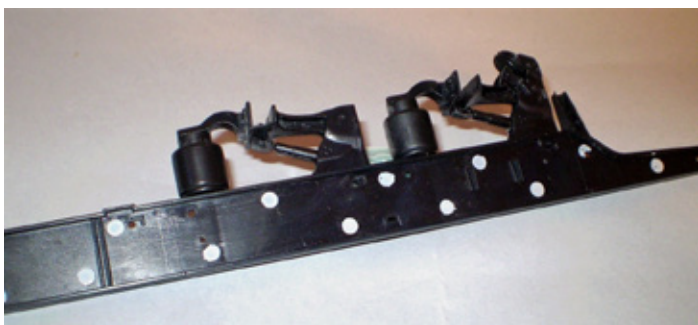
1/24th scale truck tractors for just that purpose .

<http://shop.italeri.com/Category/60-trucks.aspx>

Along with the 179 parts, in various colors, Italeri supplies a lovely decal sheet with company logos, warning stencils, and a plethora of European license placards. There is a small fret of silver photo-etch for the catwalk on top of the tank. Six black vinyl tires and some gray vinyl tubing are also included in this kit. The tubing is used for piping



detail on the tank. The kit is molded in three colors with the trailer bits molded in black, the tank in white plastic, and the wheels molded in silver. Note: There are photos of all of these bits and pieces on Italeri's website, just click the appropriate link provided.



Construction follows the usual sequence for just about any truck or trailer kit: you start with the trailer which means you begin with the frame rails. Some detail bits are added to these parts (back half of the air shock bags, stiffeners, air tank, etc.) and then it's on to the cross members, frame end

caps, and towing pintle. This being an Italeri kit you will need to spend some time dealing with all the ejector pin marks and mold seams. This is a rather important step as most of these areas will be visible when the model is finished.. Do take some time to get all the cross members lined up properly or your trailer is gonna be all wonky-looking (Technical Note: 'wonky-looking' is an industry term for "all askew").



The three axles, with their finely molded disc brake drums, are added next along with the other fiddly bits (landing gear, side clearance markers etc.) common to any commercial truck trailer. If you're detail oriented, this is a perfect time to add any brake lines or electrical cables.

The last step with assembling the trailer is to insert the detail molded two piece wheels into the black vinyl tires and away you go! Italeri has engineered the wheel/tire assemblies in such way that when attached they 'lock' onto the axles for a snug fit. This eliminates the need to send the vehicle





into the shop for some alignment work. If you've ever built a commercial truck or trailer kit you know of that which I speak. This is a big plus. Kudos to Italeri for adding some molded valve stems on the wheels, something often missing from other kits.



The tank is all of four parts (Two halves/two end caps). Sounds simple enough but the length of this seam can lead to some alignment issues, so go slow and avoid unnecessary sanding and seam filling. There are a number of detail bits (pressure relief valve, butterfly valve, quick release coupler) that get added to the top of the tank.

Italeri provides some vinyl tubing for added detail on the lower portion of the tank and as overflow piping on the top. There are a couple of small parts that represent the piping connections for this detail that are added to the tank. Be careful, the placement of these parts (7e) in Step Seven is kinda buried in the instructions. There is also a protrusion on kit part number 9a (one of the end caps for the tank). This protrusion holds two of the nipples for that vinyl tubing. You may wind up knocking it off or bending it several times, the way I did. Italeri designed an



option for you in regards to whether or not to show the tank manhole in an opened or closed position. Italeri provides eight lovely, detailed wing nuts for 'dogging down' the upper tank lid/dome.

Your next task is assembling the support frame for the 20' tank. Following the precedent established with assembling the tank, you have two end pieces with an upper and lower frame piece. Again, you will encounter a number of mold parting lines and ejector pin indentations on these parts. Once you have removed those, what is left of the assembly process is to add the support frames and photo etched screens for the catwalk. Don't forget the access ladder.



Painting this beastly is pretty simple. Each component (trailer, tank frame, tank) are all one color.





Italeri does provide color suggestions throughout assembly for both the trailer and tank but just about any color you choose will be appropriate. All one need do is observe the current crop of tanker trailers on the road to get an idea of the



color options available. Although most tank trailers are either white or polished bare metal. If you choose bare metal, you will have an opportunity to hone those painting skills on a large canvas. Just a thought.

Italeri's 1/24th scale TecnoKar Trailer with 20' tank is not a difficult model to complete. I did it! You may find yourself cursing all those ejector pin marks and mold lines but you'll be grateful you dealt with them as the trailer is kinda of an open concept deal. All of the detail in this kit is quite visible once complete. The detailing ideas mentioned throughout are, of course, optional but in 1/24th scale their absence may be noticed.



The marking options really boil down to which license number to use. Or you could go with my original idea which was as a 'What-if' project. Paint the entire thing German Panzer Gray and print your own stenciling for a German T-Stoff tank trailer. [Technical note; T-Stoff (hydrogen peroxide) was a component of rocket fuel used by Germany during WWII.] But that idea got lost in translation so I went with the kit supplied decals. Either way you're going to wind up with a large and impressive model. Add an Italeri tractor and a real show stopper is in your future.



My thanks to Italeri and IPMS/USA for allowing me to review this kit. Addio!

Rick





On The

TABLE

By **Flanged End Yoke**

The Holidays are over. Hopefully your stash received an injection of new kits to keep it fresh.

December's meeting was a good one. Our year end Model of the Year contest was held at the meeting in which all of the winners from the past months compete for the Model of the Year.

Let's start with the new stuff on the table and finish out with the Model of the Year contestants.

Alex Gashev brought in his completed Tamiya Sturmgeschutz 4 in 1/35th scale.



Dave Edgerly brought in a Bandai 1/144th Star Wars Millenium Falcon.



Keeping on a Star Wars note Mike Gilsbach shared with us his 1/12th scale Imperial Storm Trooper and DARTH Vader models.





Ron McCracken brought in three gems in 1/72nd scale.



The first was a Sword FJ-3 fury.



The second was a Fujimi A-4B .



The third was an Airfix P51D.

Tim Robb brought in his completed Esca 1/72nd scale Mig 27.



Milton Bell shared his Heller Hurricane Mk 2



and a DML PzKpw III both in 1/72nd.



Rick Herrington brought in a 1/35th Italeri Nebelwerfer 41





and a Heller 1/400th German Pocket battleship Admiral Scheer.



Mike Lamm was busy this month with an Academy 1/144 P38j



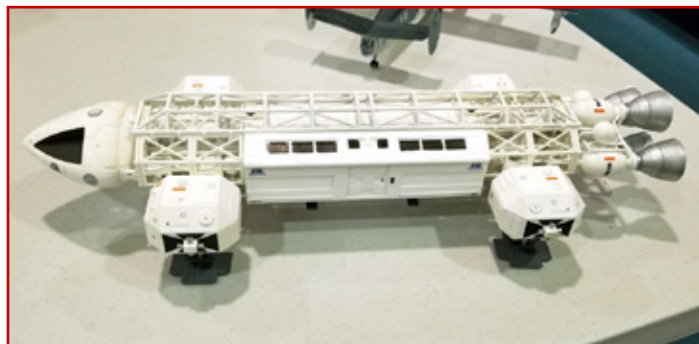
and a 1/35th Tamiya Sherman M4E8.



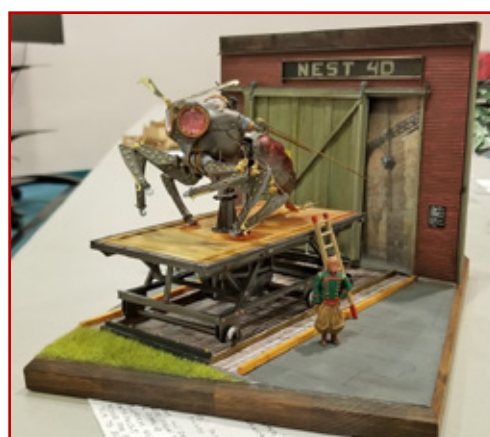
Mike Gilsbach garnered the honors for Model of the Month with his Tamiya Afrika Corps Flak 36 diorama. Mike also competed in the Model of the Rear contest with this offering.



We had 6 winners from the past year's model contests entering into the final competition including Mike Gilsbach's winner for December. Bill Delk with his Space 1999 Eagle Transporter.



Dave Edgerly with two of his winners, the Hornethopter



and EPZR Crazy Cat.



Ron McCracken with his 1/72nd scale Coronado seaplane.





Finally the winner of Model of the Year was Ziggy Downs-Bumgarder's Psycho Zaku by Bandai. Congratulations Ziggy!



Thanks everyone for a great modeling year!

Flanged



This Month In History

January 1, 1776 - During the American Revolution, George Washington unveiled the Grand Union Flag, the first national flag in America.

January 3, 1959 - Alaska was admitted as the 49th U.S. state with a land mass almost one-fifth the size of the lower 48 states together.

January 5, 1972 - President Richard Nixon signed a bill approving \$5.5 billion over six years to build and test the NASA space shuttle.

January 5, 1976 - In Cambodia, the Khmer Rouge led by Pol Pot announced a new constitution which legalized the Communist government and renamed the country as Kampuchea. During the reign of Pol Pot, over 1 million persons died in "the killing fields" as he forced people out of the cities into the countryside to create an idyllic agrarian society. Educated and professional city people were especially targeted for murder and were almost completely annihilated. In January of 1979, the Pol Pot was overthrown by Cambodian rebels and Vietnamese troops.

January 8, 1815 - The Battle of New Orleans occurred as General Andrew Jackson and American troops defended themselves against a British attack, inflicting over 2,000 casualties. Both sides in this battle were unaware that peace had been declared two weeks earlier with the signing of the Treaty of Ghent ending the War of 1812.

January 10, 1912 - The flying boat airplane, invented by Glenn Curtiss, made its first flight at Hammondsport, New York

January 16, 1991 - The war against Iraq began as Allied aircraft conducted a major raid against Iraqi air defenses. The air raid on Baghdad was broadcast live to a global audience by CNN correspondents as operation Desert Shield became Desert Storm.

January 17, 1966 - A Hydrogen bomb accident occurred over Palomares, Spain, as an American B-52 jet collided with its refueling plane. Eight crewmen were killed and the bomber then released its H-bomb into the Atlantic.

January 21, 1976 - The Concorde supersonic jet began passenger service with flights from London to Bahrain and Paris to Rio de Janeiro, cruising at twice the speed of sound (Mach 2) at an altitude up to 60,000 feet.

January 25, 1959 - An American Airlines Boeing 707 made the first scheduled transcontinental U.S. flight, traveling from California to New York.



OLD RUMORS/NEW KITS

Rick Herrington, Ron McCracken, Mike Lamm, Golzar Shahrzad

Shipping News

By Rick Herrington

I don't know if it's the month of December with the holidays and all but remarkably few new ship releases this month.

We'll start out with 1/700th scale.

First up is a new release from Hasegawa the JMSDF JS Izumo. The official description is a multi-purpose destroyer. This is actually their latest and greatest helicopter carrier that has been modified to carry F-35 fighters with the addition of a ski jump deck. The threat of Chinese aggression in the South China Sea has put the Japanese back in the aircraft carrier business.



Speaking of Chinese aggression, next up is a new kit of the People's Liberation Army Navy Type 002 aircraft carrier. This is one step up from their rebuilt Ukrainian carrier. Eventually the Chinese hope to field strike drones from their carriers and have steam or electro-magnetic catapult launched aircraft on their carriers. This version is a stop gap to be able to project their naval power until the more modern carriers are ready.



Fujimi is up next with a target for your Gato class submarine. It's an Imperial Japanese Army troop ship. Yes... I said Imperial Japanese Army. The service rivalries in WW2 Japan were such that the army operated its own troop ships. They didn't want to have the navy to have anything to do with it.



In 1/200th scale we have a couple of new releases.

For you Yamato fans Fujimi has fixed you up with a super detailed bridge/superstructure. This is to dress up your long in the tooth Nichimo model.



As sought after as the Yamato is in plastic I'm surprised Tamiya, Trumpeter, or Fujimi hasn't released an updated Yamato in 1/200th scale.





Next up in super scale is the Trumpeter USS Yorktown CV-5. The Yorktown was sunk at the Battle of Midway.



Now to some out of the ordinary subjects. Fujimi is releasing their own Yellow submarine. No, not the Beatles one. This is a deep sea research vehicle.



Last up is an Airfix model of a classic gun platform: HMS Victory. They are releasing it in 1/180th scale.

That's it for this month. Grab a kit from your stash and build it.

Ricardo



New and In View Aircraft

By Ron McCracken

January is looking like a very exciting month. In fact, there is so much to cover I'm going to skip the re-issues and concentrate (to the extent possible) on the truly new.

In the traditional Armor scale (1/35th!!) Kitty Hawk is releasing a new-tool MH-60L Blackhawk. The MH-60L Black Hawk is a special operations modification of the standard UH-60 "Blackhawk". Photos of a test build found on the web look very impressive.



Next we come to the ever-popular 1/48th scale. Let's start with Eduard, who have three new releases: First there is a ProfiPACK edition kit of the Grumman F6F-3, kit 8227. It features Eduard plastic with five decal options, color photo-etch, painting masks, and resin wheels.





Next is a Limited Edition Dual Combo kit with one Fw 190D-9 and one Bf 109G-14 (G-14/AS), kit 11125. The claim is made that this is the very first release of a Bf 109G-14/AS version in this scale. The G-14 entered service in July 1944 as an attempt to create a standard type, incorporating many changes which had been introduced piecemeal during production of the G-6. A high-altitude fighter, designated G-14/AS was produced with the DB 605ASM high-altitude engine.



The kit is focused on German aircraft that participated in Operation Bodenplatte on January 1, 1945. Operation Bodenplatte (Baseplate) was an attempt by the Luftwaffe to cripple Allied air forces in the Low Countries during the Second World War. Considerable damage was done, but not enough to stem the allied advance and it cost the Luftwaffe irreplaceable pilots.

It features Eduard plastic, eight decal options, color photo etch and painting masks.

Finally there is a new Weekend edition kit of the Spitfire LF Mk.IXc, kit 84151. The LF Mk.IXc version

was Merlin 66 powered (Versus Merlin 61 or 63 in basic Mk IX). The LF was sometimes referred to as the Spitfire IXB. The kit features Eduard plastic with two decal options.



And now, for something completely different, AFV Club is due to release their long-rumored U-2A. Photos of a test shot found on the web indicate this will be a marked improvement over the only other injection-molded kit of this aircraft in 1/48th scale, the aging Hawk/Testors kit.



Moving right along, Hobbyboss has announced a new-tool kit of the Yak 28P Firebar. As near as I can tell, this is NOT a re-pop of the Bobcat kit, but truly a new mold. Other than that, about the only information out there are photos of a test shot.





Last we have the new tool Zvezda Yak-130 (Mitten), kit 4821. This aircraft is a Trainer and fighter/ground attack aircraft. Included in the kit are Decals for 2 Russian, 1 Belarus, 1 Algerian, 1 Myanmar plane and two pilot figures.



There's likewise lots for the One True Scale (1/72nd) fans to cheer about.

RS Model has announced a Ki-61-II Kai Hein (Tony), kit 92230. This is a late variant of the Ki-61 II Kai with bubble canopy.



Sword has announced two variants of the McDonnell Demon, the F3H-2 (kit 72122) and the F3H-2N/M



(kit 72123). Assuming these kits live up to the standard being set by their other recent releases, they'll be a welcome alternative to the Emhar kit.



Dora Wings has announced a new P-63C/E Kingcobra Dual Combo (kit 7201D) and several distributors are taking advance orders. The kit includes kits of both the P-63C and P-63E, with a fret of photo-etch and painting masks for each and several decal options.

Bell P-63C&E Kingcobra Dual combo



HobbyTerra.com

Finally, ICM has announced a MiG-25RB Foxbat (kit 72173) which seems to be based on their MiG-25RBT kit released last year, but with some additional/new parts.



Ron



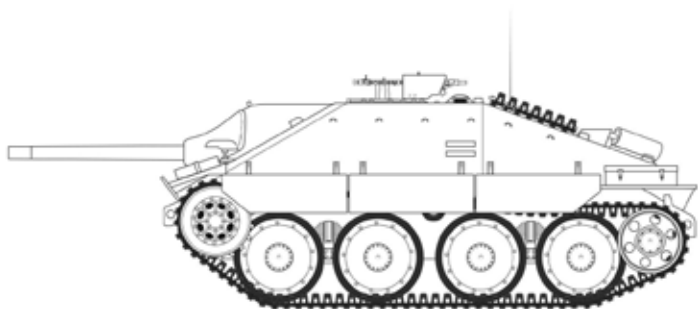


Tracked Topics

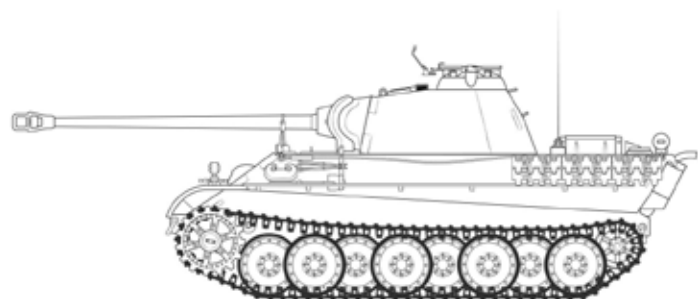
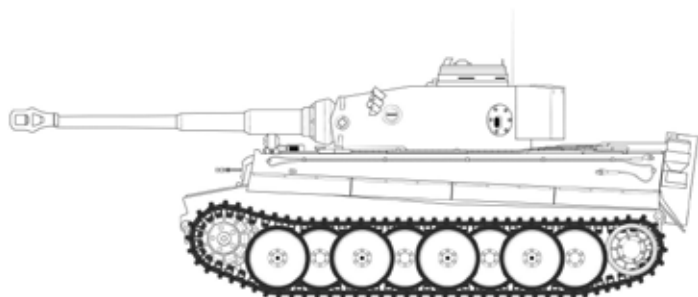
By Rick Herrington

*T*his month we're going to stick to 1/35th scale.

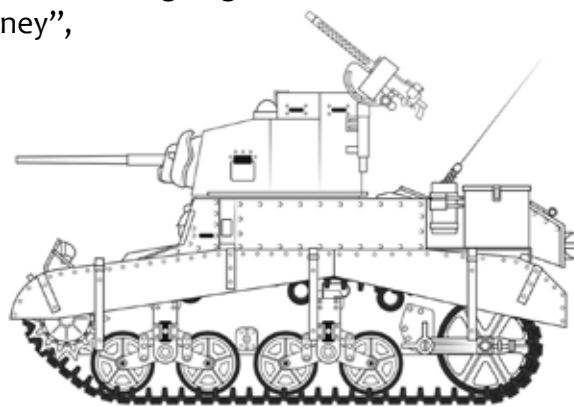
Let's start off with some big news from Airfix. Yes, I said Airfix and we're not talking about 1/32nd scale. For those of you who have lauded Airfix's efforts in releasing armor kits (Like me) and seen them fail we need to wish them well in their risky move. In 2019 Airfix has decided to jump into 1/35th scale in a big way. Here are just a few of the kits that are available for pre-order in 1/35th scale. Their first release planned will be a Jagdpanzer 38T Hetzer.



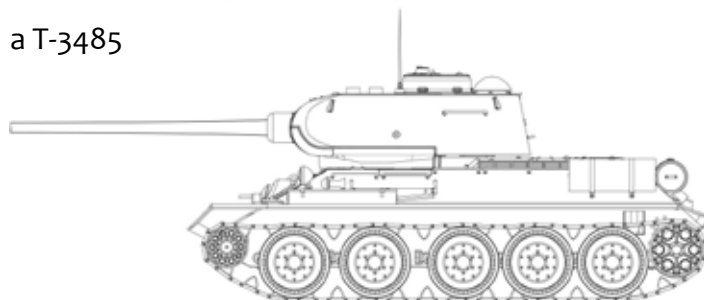
Of course there will be the obligatory Tigers and Panthers.



Airfix is also going to release an M3 Stuart "Honey",



a T-3485



and a Sherman M4A3 76mm version.



If Airfix is able to pull off what they did with their 1/72nd scale aircraft models with their 1/35th tank models that would be a good thing for everyone.

Quality kits at a lower price point is the key. 1/35 model builders are used to accurate kits well engineered. If they can release accurate well-engineered models for their first few releases the modelling community will welcome them with open arms.

If not with the Social Media and modelling sites out there they may not have the chance to improve with their later offerings. I'm sure Airfix has thought this through otherwise they would not be taking the risk.



Hobby Boss is up next with three Leopard Based models. The first is a Bundeswehr Leopard 1A5.



The second is a Canadian Leopard C1 Mexas.



The third is a Canadian Leopard C2. This is the Canadian version of the German Leopard 1A5.



Meng is up next. First is a collector edition of their excellent T-90 release.



This one includes a figure of Vladimir Putin, bare chested, riding on a grizzly bear.

Meng, competing with Copper State Models, is releasing a British Rolls Royce armored car.



Finally from Meng is a People's Liberation Army ZTZ 96B Chinese main battle tank.



Takom is releasing a Jagdpanther G1 with full interior.



Amusing Hobby is favoring us with a British heavy tank release. The FV-214 Conqueror was a post WW2 development in response to heavier Soviet tanks like the IS 3.



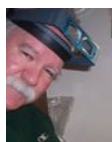
Last up is a forthcoming release from Trumpeter. This will be a Tiger 1E mid production with Zimmerit.



Oh boy! Another Tiger 1E model. (Just like another Yamato ship kit)

That's it for this month. Grab a kit out of your stash and build it!

Rick



It Figures

By Michael Lamm

Happy New Year!!! One of my New Year's resolutions is to make a better effort at painting figures and improving my skills in that area. Luckily, I have a lot of room for improvement, and thankfully, there are a lot of new options out there for me to hone my skills. Here are a few highlights for the New Year.

Brand new on the scene of plastic models is Gecko Models out of Hong Kong. They've recently released a number of well-received British armor subjects, and most recently, two sets of British figures. I haven't been able to find any built up versions, but the sprue shots look promising.

First up, is a British machine gun crew in action. This set includes five figures spread over 13 sprues and over 130 parts. Each figure consists of about 9 parts, and features the leather jerkins worn over the uniforms while in Northwestern Europe. With the large number of parts and sprues, there are a number of equipment and posing options. The set includes a Sten Mk II SMG, 4 different SMLE rifles, and a Bren Mk II that can be posed with the bipod deployed or stowed. The real gem in this set is the Vickers machine gun. The set includes some photoetch for parts of the Vickers, as well as, rifle straps, and parts of the other weapons. A really nice addition, is the inclusion of a decal sheet with unit and rank markings for the figures.



<http://www.gecko-models.com/>



The second figure set from Gecko is of a British MG Crew on the march. Again, the sprues shots look nice, and many of the same details in the earlier set are featured in this one: leather jerkins, rank and unit marking decals, photo-etch details, and the same set of weapons. Also, no set of British figures would be complete, with a spot of tea and both of these sets naturally include tea cups.

British infantry figures have been largely ignored by recent releases in the figure world, particularly when it comes to plastic molded ones, and this great set of figures from Gecko Models looks to be a great addition.



<http://www.gecko-models.com/>

From D-Day Miniatures studio comes another under represented set of figures. This time, depicting the German invasion of the “low countries” in 1940. The set of four figures, “For Queen and Country”, features two Dutch officers, a Dutch infantryman, and a captured German Fallschirmjager with his arm in a sling. The nicely detailed figures are cast in resin. The Dutch soldiers have multiple parts,

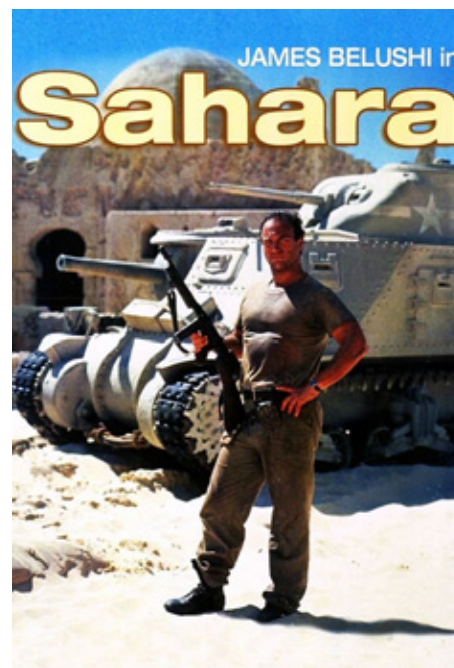


but the German soldier is cast as one piece. All of the figures appear to have nicely creased uniforms with natural looking draping and folds. The figures can be purchased as a set, or individually.



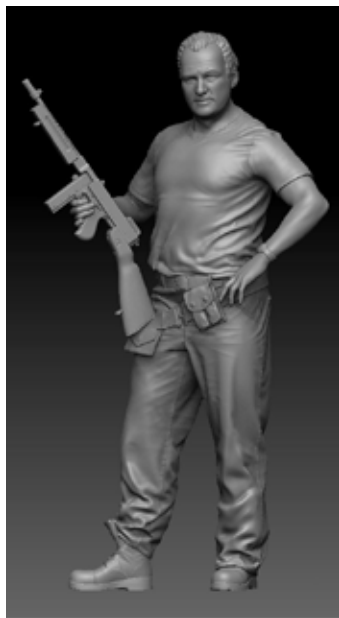
<http://www.ddayminiaturestudio.com/>

Def Models is probably best known for their excellent resin wheels and armor conversion kits, but they have a number of figure offerings in their catalogue too. Most recently, they released a figure from the old Sahara movie. “You mean the classic 1943 film starring Humphrey Bogart trying to hold off the Afrika Korps? Sweet!” No... not that one, a more recent Sahara movie release. “Oh, the 2005 film starring Matthew McConaughey looking for lost





Civil War treasure in the African desert? Alright, alright, alright!” No... not that one either. A little older. “The 1983 Brook Shields film where she pretended to be a man to drive her late father’s car in a race across North Africa?” Not that one either. I’m talking about the 1995 made-for-TV remake of the 1943 movie, Sahara, only this time starring James Belushi [sad horn]. I guess when you’re a small South Korean model accessory company, you have a limited budget for purchasing film rights and you go with what you can get. In any case,



Def Models has released both a 1/35th and 1/16th version of Sgt. Joe Gunn from the 1995 movie, Sahara. Mr. Belushi has never looked better. The resin parts look crisp and the moldings are clean and realistic. The resin figure comes in five parts and includes a photo-etch sling for his Thompson submachine gun, as well as a small base for the figure.



Def Models next offering is also a little strange. A 1/20th scale corgi dog, called “Thor”. This is a 3D-printed casting of a dog breed famous probably most famous for their Royal bloodline, but also for being reliably cute on various internet sites. If you’re not sure what you can use a 1/20th scale dog for, since that’s kind of a strange and niche scale,

check out the next offering from Def Models. Also, in case you’re unaware of the name’s significance, there was an internet trend for a while where people would dress their corgis in Thor costumes, and it was called a “Thorgi”! How can you not love it? Thor costume not included.



Finally, from Def Models, comes something more useful for modern subject modelers. A female Israeli Defense Force soldier in 1/35th, 1/24th, 1/20th (to go with your Thorgi), or 1/16th scale. This nicely detailed 3D sculpted and printed model comes with your choice of weapon, and hand choices depending on the scale. All sizes have the figure posed in





a relaxed stance with her Israeli Tavor TAR-21 rifle slung low over her back standing in fatigue pants a sleeveless undershirt. In her hand, she's holding a cell phone. All scales include a small street corner base for the figure, but the 1/24th scale figure comes with a choice of hands, allowing you to pose her holding a cell phone, or a cup of coffee. The 1/16th figure comes with the most options and allows you to choose between weapons either the Tavor TAR-21 rifle, or a M4 carbine. The 1/16th figure also includes the additional hand choice of having her hold a soda can. Plenty of interesting choices from Def Models.



<http://www.defmodel.com/>

Finally, Wings Cockpit Figures specializes in highly detailed 1/32 resin figures, primarily based on pilots and ground crew for WWI and WWII aircraft. His latest set of figures covers a variety of Soviet pilots. I've always liked his poses, they show the figures in realistic settings, normally with great expressions on their faces. This batch of VVS pilots and crew are no different. In addition to the great poses, and excellent uniform details, the expressions on the figures faces are really great. It's nice to see more representation of the female combat

pilots that were very common in WWII for the Soviets. Wings Cockpit Figures has two females in this collection of 5 figures, with the other three male figures posed in both the summer/spring flying uniform, as well as two figures in the heavier winter clothes.



They also carry WW2 Allied and Axis WW2 figures as well as WW1 pilots to go with your Wingnut Wings gems.

<https://www.facebook.com/WingsCockpitFigures>



ICM is continuing its releases of modern warriors in 1/24th scale with a second SEAL Team fighter.



Last up MiniArt is releasing what looks like a great set of US Tankers in cold weather uniforms. The poses look great on the box art. It's hard to tell from the built up photos how they will look painted.



Well, that does it for this month. So, let's all honor our New Year's resolutions, at least for the first month, and go build a model and add a figure to it.

You won't regret it!

Mike



Sundries

By Golzar Shahrzad

Modelers of early U.S. efforts (circa 1955) to guard against the massive hordes of Soviet long range bombers laying waste to the U.S. will appreciate a new offering from Freedom Models, the Nike Hercules surface-to-air missile. The MIM-14 (Nike Hercules) was deployed throughout the United States and this is the first new mold since the Renwall/Revell effort in 1957. (Talk about long over due!) This injected molded kit is in 1/35th scale and includes the launcher which can be combined with multiple kits to form a four missile battery.

Nike Hercules missile
surface-to-air missile
1/35 SCALE
MIM-14
COMING SOON !!

FREEDOM
Model Kits



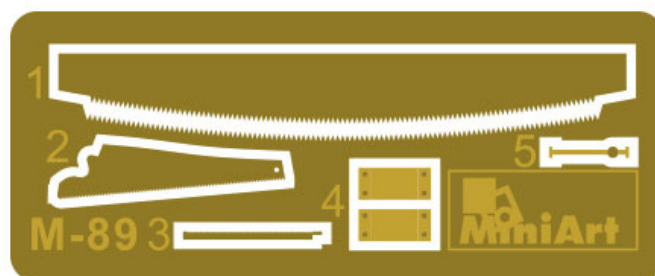
Freedom Models is also adding to their line of compact series aircraft. (Think Eggplanes.) Two new offerings are the Fairchild C-119 Flying Boxcar and the Lockheed C-130H Hercules.



Both kits come with Republic of China markings. A clever person might be able to turn either into a spectre-type aircraft without too much effort.



Miniart Models released a concrete mixer set last month and are following that release with some more construction stuff, specifically a Construction Set. This 1/35th scale accessory kit includes ladders, a table, buckets, a cart, bricks, an anvil, beams, and jack stands. There are also some photo etched parts for several saws and wrenches.



Miniart Models has also announced a full 1/35th scale kit of a Railway Covered Goods Wagon 18t 'NTV' type (railroad car). The kit represents a European style railway car from the 1940's and includes some photo etch details, six different marking options, and a length of railway track for display purposes.





Many moons ago Pegasus Models released a 1/350th scale kit of Werner Von Braun's Moonlander. Von Braun envisioned this craft as kind of a freighter for ferrying personnel and



supplies to U.S. moon bases in the fifty's. While the injected molded kit has some nice detail another company, Paraflix, issued a companion photo etch detail set for the Moonlander. Both kits were sold separately at the time. Platz has combined the two for your modeling ease and enjoyment.

Panda Models has announced a 1/35th scale, injected molded kit of the High Mobility Engineer Excavator (HMEE-1). Developed by JCB Industries,



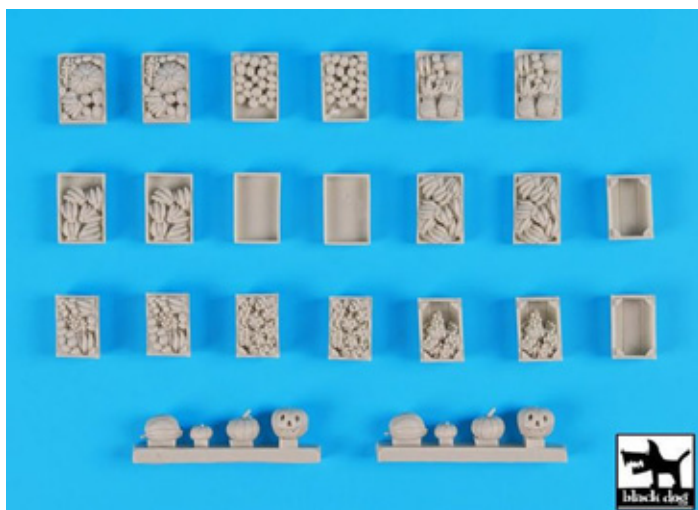
this is basically an armored front loader with backhoe. Click the link for a short video of this beast in action.

<https://www.youtube.com/watch?v=TYPjodRZD1E>

If your fond of herding cats you could become an officer of your local model club or you could send off and get Matho Models set of 1/35th scale cats. These cats are cast in clear resin and will make a nice feature in your next diorama.



Staying with diorama accessories, Black Dog has a fruit assortment to round out the next vignette you might be working on. The 1/35th scale fruits are cast in resin with some in crates while others are separate items.





One cool aspect of this fruit assortment, aside from the bananas, are the pumpkins, Jack-o lanterns, and those empty crates.



While not precisely a model or kit, this Emperor Scorpion might make for an interesting focal point of a diorama. The possible action-figure type critter, from Revoltech, is 20cm long and features articulated legs, pincers, and tail.



Or, you could use it scare the bejesus out of your soon to be ex- friend or wife.



From the wild and wonderful world of weird looking aircraft comes an injected molded model of the DeHavilland Fox Moth. The DH83 was a light passenger aircraft (circa 1931) that featured the pilot seated above the passenger cabin. This Kiwi Fox Moth is from AVI Models, in 1/72nd scale, and features four schemes in New Zealand service.

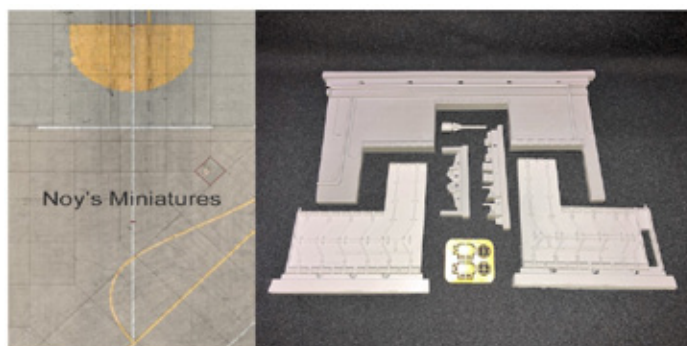


Not as goofy looking as the Kiwi Fox Moth, the Vought SBU-1 command aircraft does offer the modeler a different shape to an important aircraft. This release is from Lukograph and features over 140 resin parts. The 1/32nd scale kit of Vought's Corsair dive bomber also include some photo-etched bits.





Noy's Miniatures has been producing pre-printed, card stock tarmacs, runways, and hardstands to display your model on. They have recently delved into three dimensional products and one of the newest is an Israeli Hardened Aircraft Shelter (HAS).



The 1/72nd scale HAS features a full color tarmac with partial interior of the HAS. The box art shows the item fully constructed. What you don't get in the kit are all the extra bits (piping, conduits, etc.) that need to be added (from your own supplies) to make this item as illustrated. This is all laid out in their advertisements but kinda begs the question. "Why not just include those extras with the kit?"



Finally for you motorcycle fans. (Read rice burner fans) we have a 1/9th scale Kawasaki Ninja from Meng.



Golzar



King's Hobby

Modeling With You
Since 1973

New Kits and Publications Every Week!



Pick Yours Up Today!

8810 N. Lamar Blvd., Austin, TX 78753
(512) 836-7388

kinginfo@kingshobbyshop.com
<http://www.kingshobbyshop.com>



Join International Plastic Modeler's Society / USA

IPMS/USA is dedicated to the hobby (and fun) of Scale Modeling. It was started by Jim Sage, of Dallas, Texas, in 1964. There are now branches of IPMS all over the world. Our Local Regions and Chapters sponsor Model shows and contests every year, but you needn't be a member to visit the shows or attend the club meetings!

With IPMS/USA Membership, you will receive the outstanding IPMS/USA Journal six times a year - it includes features on all modeling subjects such as aircraft, armor, automotive, ships, figures - you name it! You will also find listings of IPMS contests, swap meets, hints and tips, and reviews.

Membership also qualifies you to participate in IPMS/USA sanctioned contests, and particularly in our World-famous National Convention, held each summer. As a member, you'll also be able to access our online Discussion Board, where a wide variety of modeling topics are discussed, and enjoy interaction with other serious modelers for help with questions about modeling techniques or the Society in general. Many Hobby Shops and Model Vendors around the USA offer discounts to IPMS/USA Members.

Visit us at: <http://www.ipmsusa.org/>

Join up online at: <http://www.shopipmsusa.org/category-s/100.htm>

For any questions or problems with your membership application/renewal, please contact the IPMS/USA Officer Manager at manager@ipmsusa.org

Applications using payment via Check or Money Order should be printed and mailed to:
IPMS/USA PO Box 56023 St. Petersburg, FL 33732-6023

IPMS/USA MEMBERSHIP FORM			
IPMS No.:	Name: _____		
Address: _____	If Renewing	First	Middle Last
City: _____	State: _____	Zip: _____	
Phone: _____	E-mail: _____		
Signature (required by P.O.) _____			
Type of Membership	<input type="checkbox"/> Adult, 1 Year: \$30 <input type="checkbox"/> Adult, 2 Years: \$58 <input type="checkbox"/> Adult, 3 Years: \$86		
<input type="checkbox"/> Junior (Under 18 Years) \$17	<input type="checkbox"/> Family, 1 Year: \$35 (Adult + \$5, One Set Journals)		How Many Cards? _____
<input type="checkbox"/> Canada & Mexico: \$35	<input type="checkbox"/> Other / Foreign: \$38 (Surface) Checks must be drawn on a US bank or international money order		
Payment Method: <input type="checkbox"/> Check <input type="checkbox"/> Money Order			
Chapter Affiliation, (if any): _____			
If Recommended by an IPMS Member, Please List His / Her Name and Member Number:			
Name: _____		IPMS No.: _____	
IPMS/USA		PO Box 56023	
Join or Renew Online at: www.ipmsusa.org		St. Petersburg, FL 33732-6023	

http://www.ipmsusa3.org/uploads/ipms_application_form_2016.pdf